

MSHS Counseling

Applying to College 101 & Financial Aid

Mr. Lybarger

(A-G)

tlybarger@ms.k12.il.us

Mr. Floress

(H - O)

kfloress@ms.k12.il.us

Mrs. Mills

(P - Z)

smills@ms.k12.il.us

Illinois Student Assistance Commission (ISAC)

Megan Hanson

Connect with us!



MSHS
Counseling
Website



Class of 2024
Google
Classroom

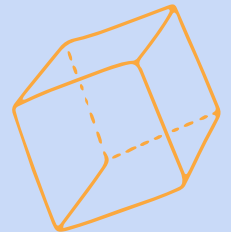
The Role of the Parent

- Encourage independence while offering support
 - Assist with proofreading and organizing
 - Help to get organized, look at deadlines, etc
 - Help out without taking over
- Establish clear expectations and limitations
 - Who will pay for what? What kind of schools are being considered? How far are you willing to go?
 - Who will make final decisions?



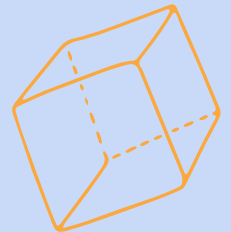
The Role of MSHS Counselors

- Students are encouraged to have an individual planning meeting with their counselor
- We can help to guide, reassure, provide ideas, etc.
- We may not know all of the answers but we often know how to get the answers



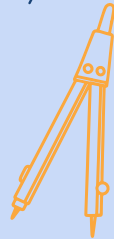
Steps in the process

- Discussing/making a plan
- Preparing a list of schools and deciding where to apply
- Campus Visits
- Applying - Early is typically best!
- Applying for Fin Aid (Dec) and scholarships (local in spring)
- Admissions offers and financial award Letters
- Explore housing options



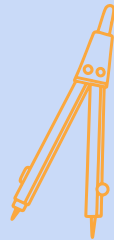
Common Factors Colleges Look at:

- TRANSCRIPT!!! Course selection and performance
- Test Scores
- Essays
- Letter(s) of Recommendation
- Activities - Extracurriculars/Work
- Honors/Awards
- Service/Volunteering



Finding the Best Fit

- There is not just ONE college that will perfectly fit a student
- You can completely make the experience your own
- Explore all of your options, and then narrow down your list
- Remember...you can only attend one!



Expand the list then narrow the list...Factors to consider:

1

Type

Public, private, 2-year,
4-year, technical

2

Campus Size

Large vs. small

3

Location

Urban, college town, rural

4

Distance

Local vs. far away

5

Majors and Programs

6

Cost

Tuition, scholarships, and
financial aid

Additional factors to Consider

7

Demographic

Social diversity

8

Academic Opportunities

Research, internships,
honors programs

9

Social Opportunities

Clubs, teams, Greek life

10

Acceptance Rate

Who gets in?

11

Graduation Rate

12

Freshmen Retention

College Applications

- Paper Applications (VERY seldom)
- Institutional applications (school websites)
- Common Application (additional fees may be required)
- Coalition for College - Rare
- Fees often apply to submit applications
 - If you qualify for free/reduced lunch, you could receive a waiver



How many to apply to?



Your profile is stronger than the school's average freshman



Your profile is similar to the school's average freshman



The most competitive schools on your list. Maybe out of state, maybe expensive

Types of Admission Cycles

Open Enrollment

Community colleges
(Although, some programs are competitive)



Rolling Admissions

Most state schools,
many private schools

Early Action

Not a binding decision, just
early notification (U of I)



Early Decision

Binding decision, must
withdraw other
applications

Priority Deadline

Set deadline which applicants
given most consideration (ISU -
Nov 15)

Types of Selectivity

Open Admission

Admits all applications; test scores may be used for selective program placement



Selective

ISU, EIU, NIU, etc.

Highly Selective

U of I, Illinois Wesleyan, etc.



Most Selective

Ivy League schools, Computer Sci @ U of I, U Chicago, etc.

Transcripts - What's included?

- Includes six semesters of high school (thru junior year)
 - Mid-Year report is more and more common (7th sem)
- Weighted and Unweighted GPA is included
- List of all courses
- Test scores not included on transcript

Transcripts - How to send

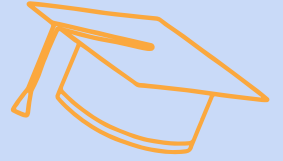
- Self Reported Academic Record (Increasingly common)
- Common Application (Increasingly common - All universities in IL)
- Parchment (Email from Parchment)
 - Send to self or to institutions or to individuals

Standardized Tests

- What does test optional mean? Make an informed decision on whether to report scores.
- Can still be a factor for some scholarships
- Fall SAT dates: Oct 7th, Nov 4th, Dec 2nd
- Fall ACT dates: Oct 28, Dec 9



Standardized Tests continued



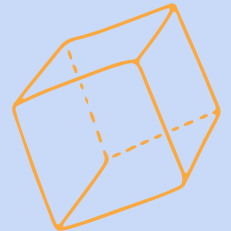
- Including test scores on college applications
 - Self-reporting (U of I, ISU)
 - Sending scores from College Board directly to schools
- Superscoring - new score based on subscores
- Look at practices/policies of schools of interest!

Average SAT Scores of State Schools

- Chicago State - 990
- EIU - 960
- Governors State - 960
- Illinois State - 1060
- Northeastern - 880
- NIU - 990
- SIU-C - 1030
- SIU-E - 1030
- U of I (Chicago) - 1060
- U of I (Springfield) - 990
- U of I (Champaign) - 1260
- Western - 960

“Middle 50%” or “Freshman Profile”

- Quick way to compare your credentials against those who have recently been admitted.
- Published for GPA and test scores
- U of I Example

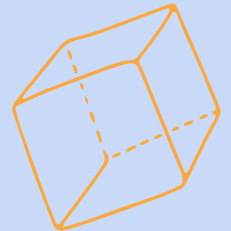


Great resources for quick info on school stats:

www.Collegeresults.org

Xello is another strong resource!

12 Reasons Why





Letters of Recommendation

- Give your writers at least 2 weeks' notice
- Provide background data (resume, list of activities)
 - If you are asking your counselor for a letter, fill out the Senior Data Sheet
- Send friendly reminders, if needed
- Letters are sent directly to the school, scholarship, etc.

Student Athletes

Create a NCAA student profile

- If you qualify for free/reduced fees, you can get a waiver
- E-mail Ms. Shore to upload your transcript
- Send test scores to NCAA (Code: 9999)

16 Core Courses - Division I

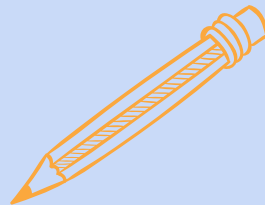
- 4 English
- 3 Math (Alg. 1 & higher)
- 2 Science
- 1 extra English, Math, or Science
- 2 Social Science
- 4 Other (World Language, or additional English, Math, Science, or Social Science)

16 Core Courses - Division II

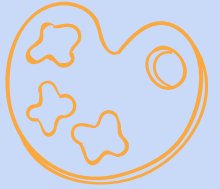
- 3 English
- 2 Math (Alg. 1 & higher)
- 2 Science
- 3 extra English, Math, or Science
- 2 Social Science
- 4 Other (World Language, additional English, Math, Science, or Social Science)

Campus Visits and College Fairs

- Check college websites for virtual campus visits and tours
- Talk with college representatives and alumni
- Meet with an advisor, if possible
- Look at housing and meal plan options
- Ask questions



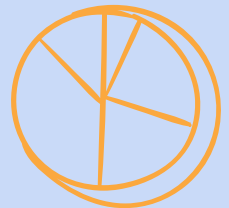
University of Illinois (Urbana-Champaign)



- Early action deadline: November 1
- Regular decision deadline: January 5
- **Admission notification: EA = Jan 26, Regular = March TBD**
- No transcripts (self-reported grades)
- Test optional

Parkland College

- No deadline, but you should still apply early
- Parkland application workshop on 9/21
- No SAT/ACT requirements
 - Scores might be used for specific program placement
- Assessment testing following admission
 - SAT/ACT scores can exempt some students



Parkland Pathway to Illinois

- Application window March 5th - April 5th, 2024
- Dual student at both Parkland and UIUC
- Majority of classes taken at Parkland
 - One class per semester taken at UIUC
- Pay Parkland tuition rates
- Not all colleges and majors participate in Pathway program

Keep Up the Good Work!

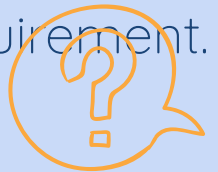
- All acceptances are “conditional”
 - Continue to work hard and earn good grades until graduation
 - Keep the schedule you reported to colleges when you applied
 - Be mindful of your social media presence
- ★ Notify schools of final decision by May 1st!



Financial Aid

- ★ New for 2023: Financial Aid documents are available in December
 - FAFSA: Free Application for Federal Student Aid
 - Alternative Application for Illinois Financial Aid
 - FAFSA Waiver
 - CSS Profile (College Board Product)

Students must complete one of these to fulfill the graduation requirement.



Illinois Student Assistance Commission (ISAC)

Megan Hanson